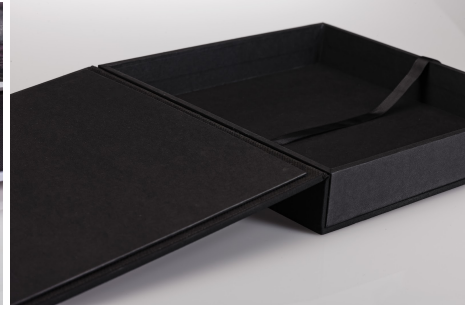


PORTRAIT BOX



Production time: 12 working days

Available sizes

13x18cm 5x7"	20x30cm 8x12"	25x25cm 10x10"	30x20cm 12x8"
-----------------	------------------	-------------------	------------------

Photographic paper (Fujicolor Crystal Archive Digital Paper Type DPII)

- Lustre
- Lustre with UV varnish
- Glossy with matte varnish Velvet

Photo prints

- Maximum 20 photo prints
- Mounted on white cardboard
- Back in white or black cardboard or printed in Lustre paper

Customized box

- Full photo on the front, spine and back
- Textured matte lamination paper
- Black or white frame
- Velvet interior in the same color as the frame
- Silk ribbon in the same color as the frame



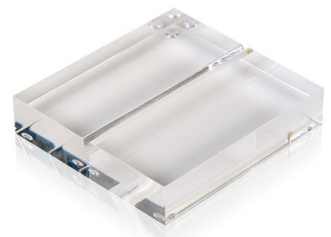
Material box

- Fabrik, Nubuk and Tekstile materials
- Gold, silver or color embossing available in Fabrik and Nubuk materials
- Laser engraving available in Fabrik and Nubuk materials
- Black or white frame
- Velvet interior in the same color as the frame
- Silk ribbon in the same color as the frame



Accessories

- Acrylic holder for photo prints



TECHNICAL INFORMATION

- All files must be sent in JPEG with 300 DPI with color profile sRGB IEC61966-2.1
- The design can be made on [KoyDesign.it](https://www.koydesign.it) (KDI) integrated into our ordering process and completely free
- Our templates are also available in [Smart Albums](#), [Fundy Designer](#) and [Album Stomp](#)
- If you prefer you can also use Photoshop with the help of our templates available for download on [My.KoyLab](#)
- The templates already include a 5 mm cut-off margin in which you should not place any important elements of the image